

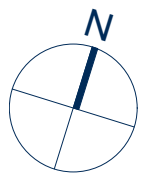
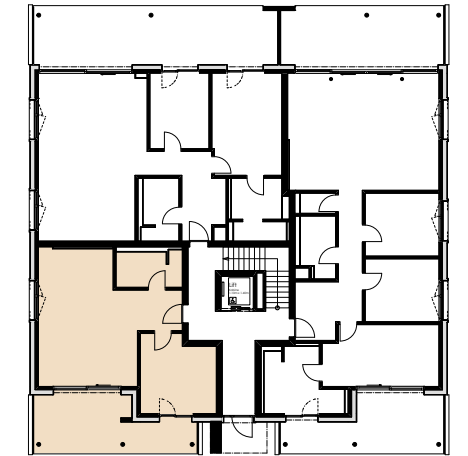
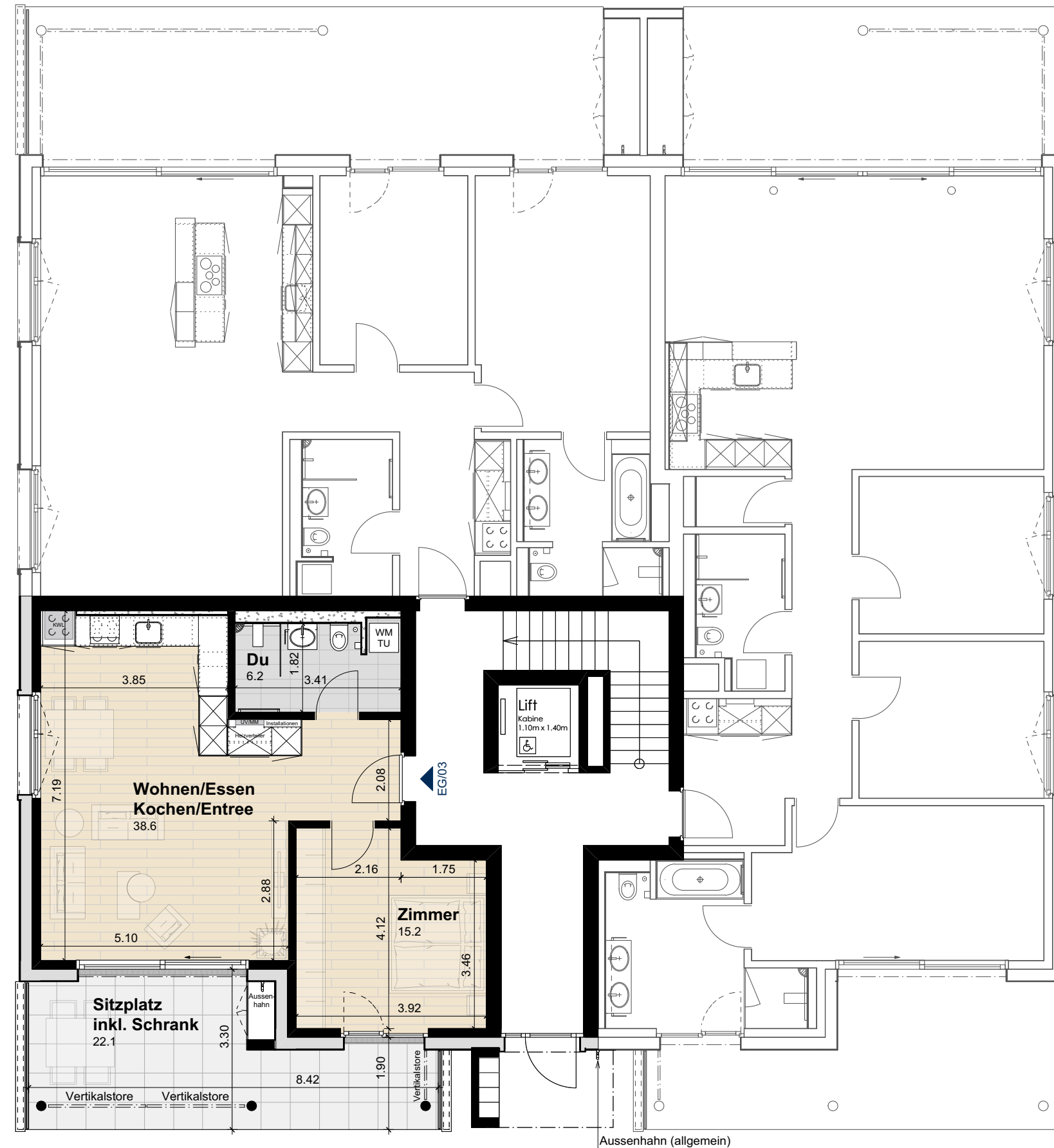
### Wohnung EG/03 (Erdgeschoss)

Anzahl Zimmer	2.5
Wohnfläche (brutto)	62.20 m <sup>2</sup>
Wohnfläche (netto)	60.00 m <sup>2</sup>
Aussenbereich	22.10 m <sup>2</sup>
Keller	10.00 m <sup>2</sup>

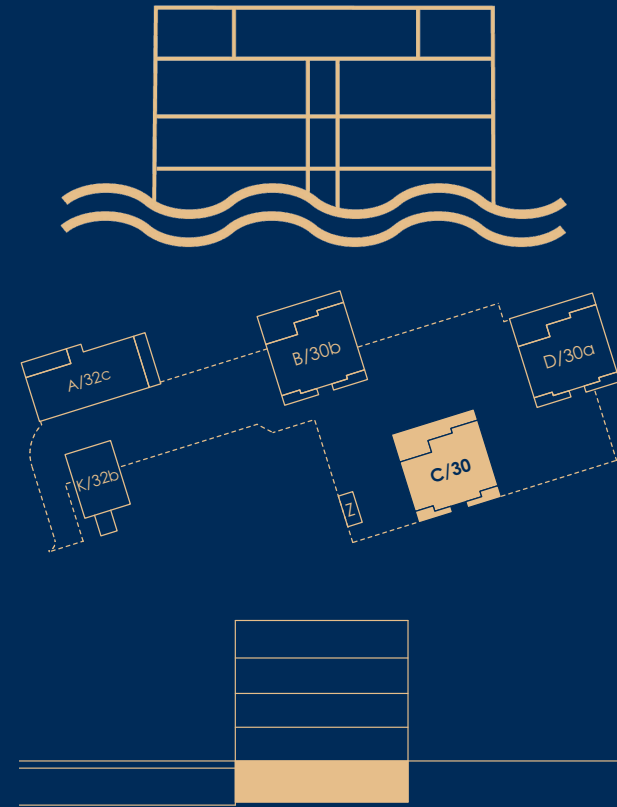
**THOMA**<sup>^</sup>  
IMMOBILIEN TREUHAND

**Beratung + Verkauf**  
THOMA Immobilien Treuhand AG  
Bahnhofstrasse 13A  
8580 Amriswil  
Tel. 071 414 50 60  
infotg@thoma-immo.ch  
www.thoma-immo.ch

30. September 2019



Masstab 1:100 (1cm = 1m)



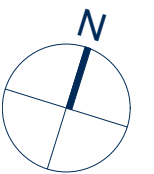
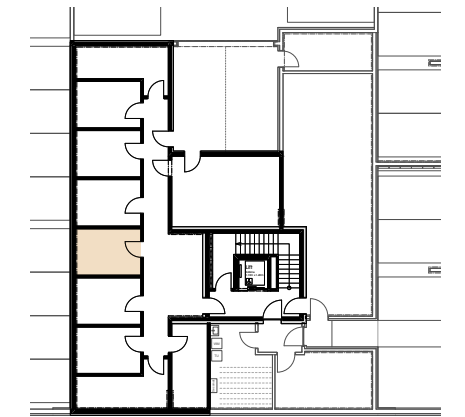
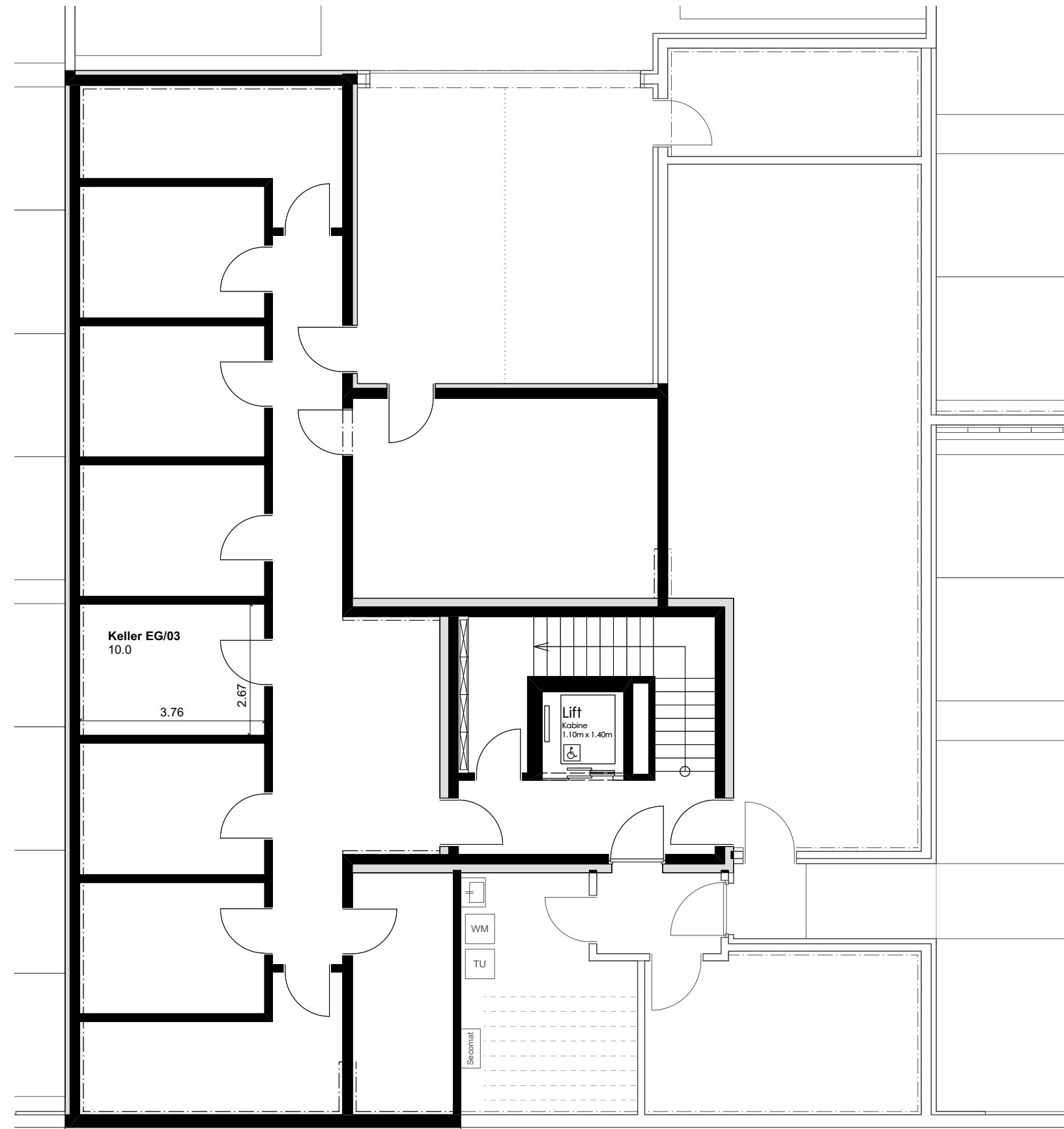
### Wohnung EG/03 (Erdgeschoss)

Anzahl Zimmer	2.5
Wohnfläche (brutto)	62.20 m <sup>2</sup>
Wohnfläche (netto)	60.00 m <sup>2</sup>
Aussenbereich	22.10 m <sup>2</sup>
Keller	10.00 m <sup>2</sup>

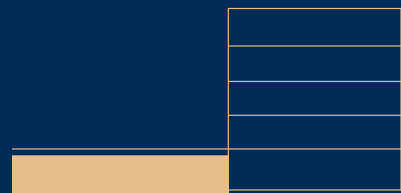
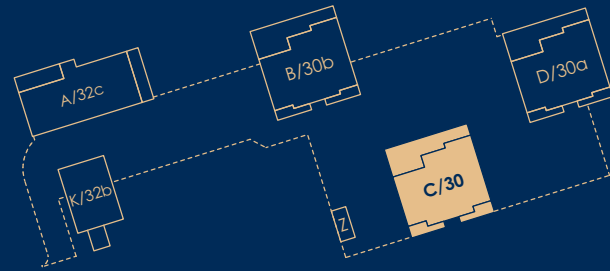
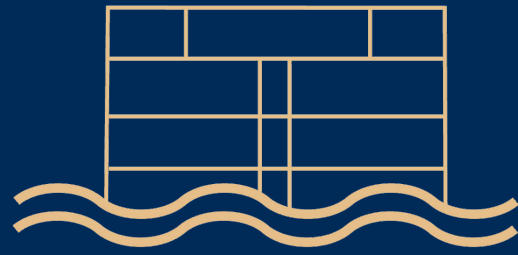
**THOMA**<sup>^</sup>  
IMMOBILIEN TREUHAND

**Beratung + Verkauf**  
THOMA Immobilien Treuhand AG  
Bahnhofstrasse 13A  
8580 Amriswil  
Tel. 071 414 50 60  
infotg@thoma-immo.ch  
www.thoma-immo.ch

30. September 2019



Masstab 1:100 (1cm = 1m)



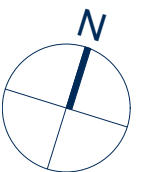
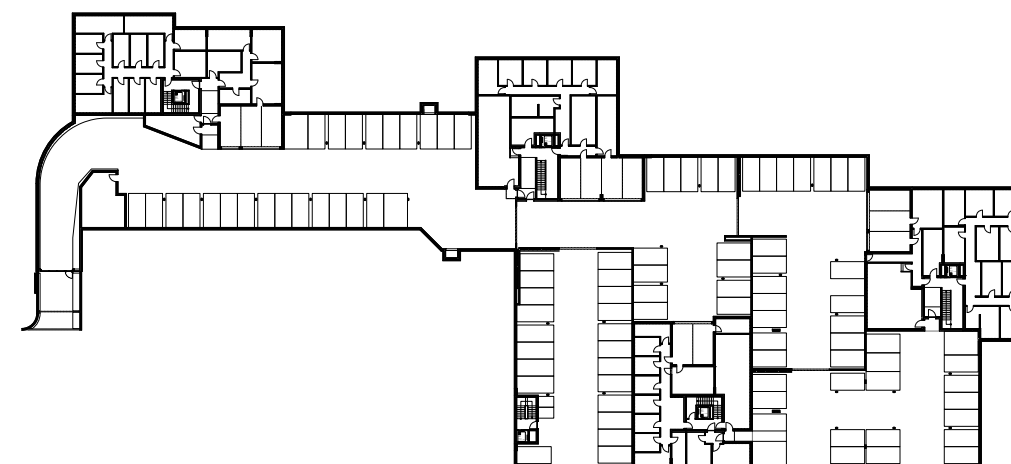
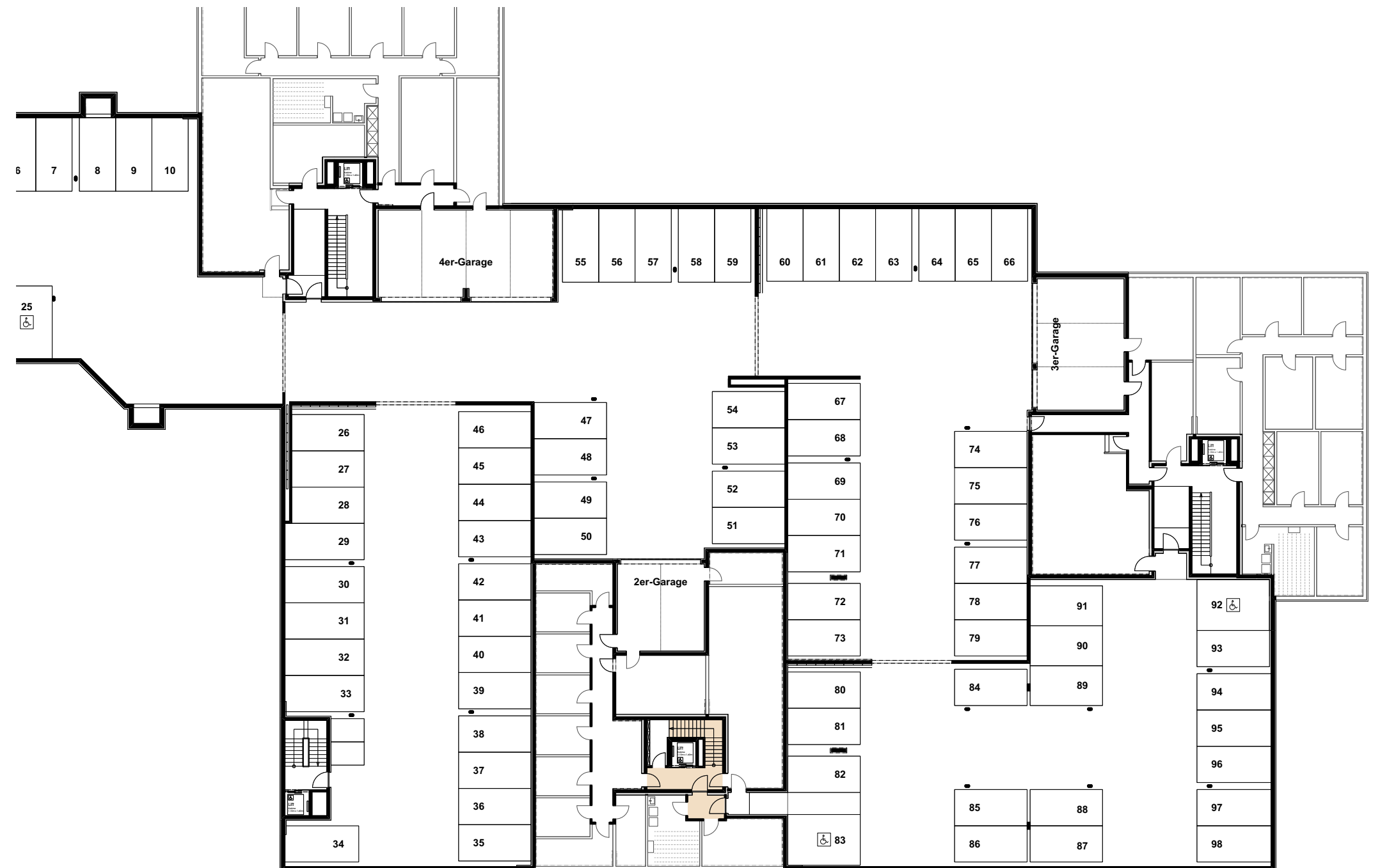
### Wohnung EG/03 (Erdgeschoss)

Anzahl Zimmer	2.5
Wohnfläche (brutto)	62.20 m <sup>2</sup>
Wohnfläche (netto)	60.00 m <sup>2</sup>
Aussenbereich	22.10 m <sup>2</sup>
Keller	10.00 m <sup>2</sup>

**THOMA**<sup>^</sup>  
IMMOBILIEN TREUHAND

**Beratung + Verkauf**  
THOMA Immobilien Treuhand AG  
Bahnhofstrasse 13A  
8580 Amriswil  
Tel. 071 414 50 60  
infotg@thoma-immo.ch  
www.thoma-immo.ch

30. September 2019



Masstab unbestimmt