

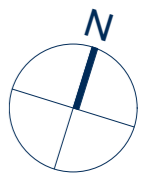
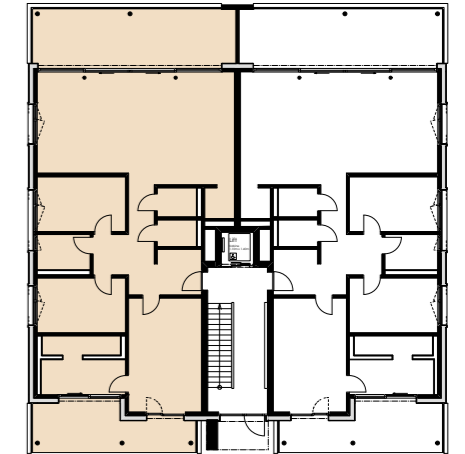
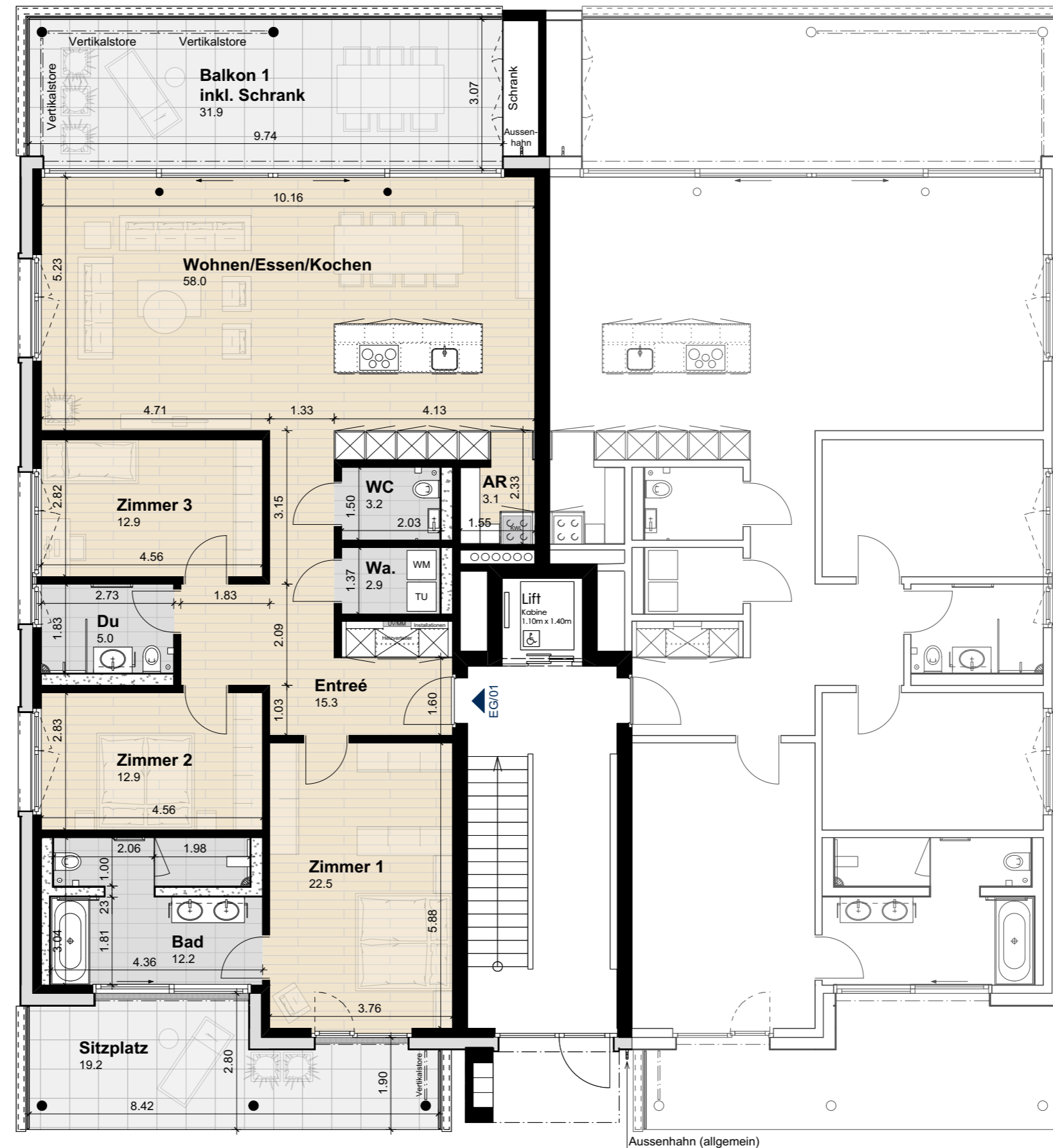
Wohnung EG/01 (Erdgeschoss)

| | |
|---------------------|-----------------------|
| Anzahl Zimmer | 4.5 |
| Wohnfläche (brutto) | 157.30 m ² |
| Wohnfläche (netto) | 148.00 m ² |
| Aussenbereich | 51.10 m ² |
| Keller | 13.30 m ² |

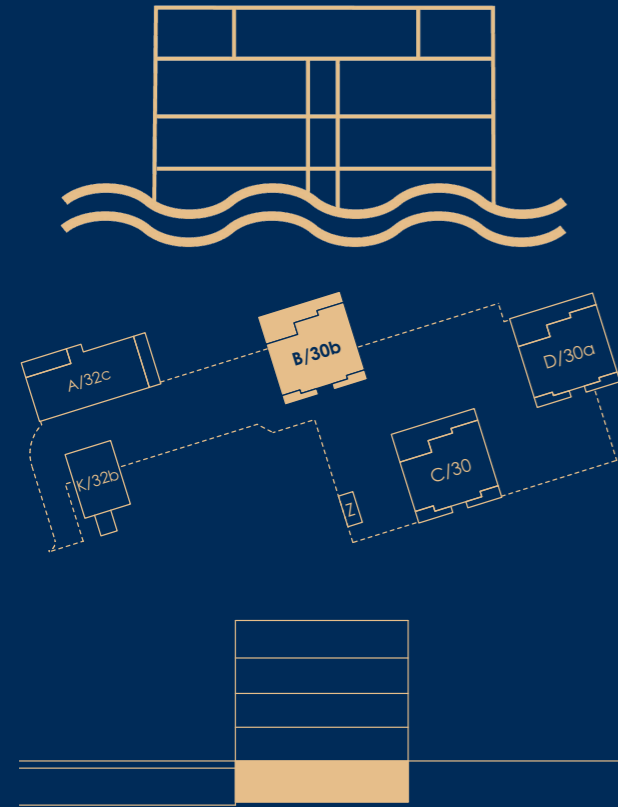
THOMA[®]
IMMOBILIEN TREUHAND

Beratung + Verkauf
THOMA Immobilien Treuhand AG
Bahnhofstrasse 13A
8580 Amriswil
Tel. 071 414 50 60
infotg@thoma-immo.ch
www.thoma-immo.ch

30. September 2019



Masstab 1:100 (1cm = 1m)



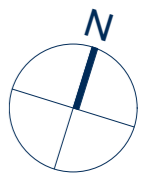
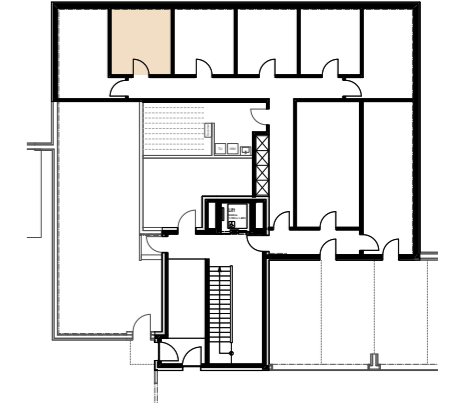
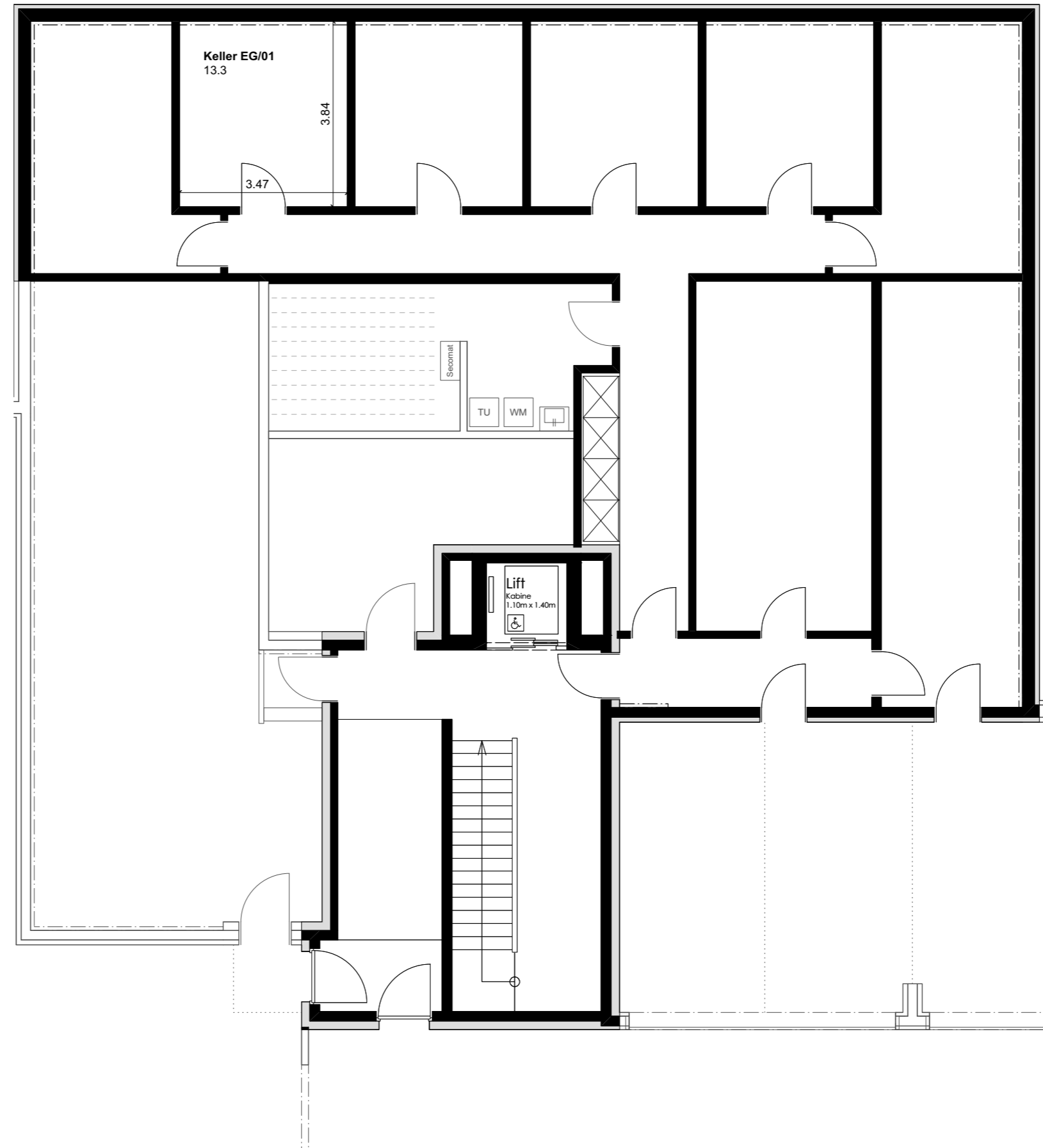
Wohnung EG/01 (Erdgeschoss)

| | |
|---------------------|-----------------------|
| Anzahl Zimmer | 4.5 |
| Wohnfläche (brutto) | 157.30 m ² |
| Wohnfläche (netto) | 148.00 m ² |
| Aussenbereich | 51.10 m ² |
| Keller | 13.30 m ² |

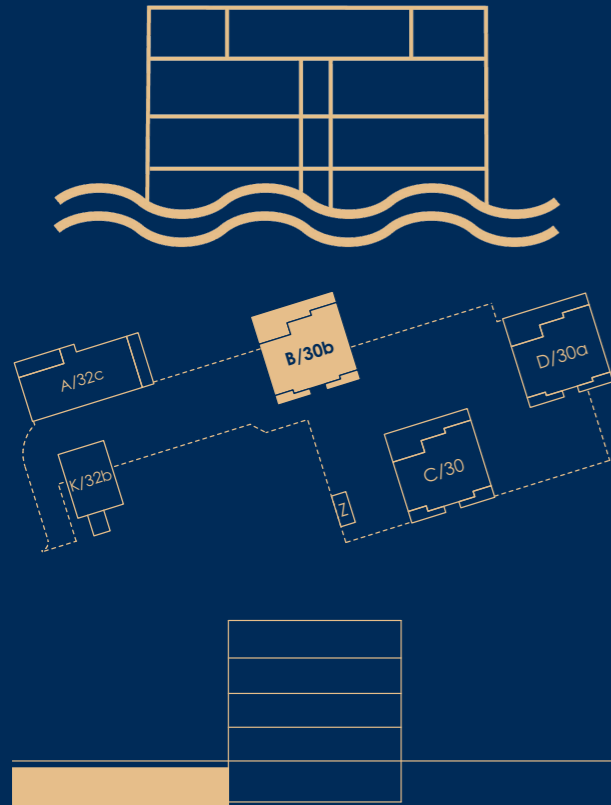
THOMA[^]
IMMOBILIEN TREUHAND

Beratung + Verkauf
THOMA Immobilien Treuhand AG
Bahnhofstrasse 13A
8580 Amriswil
Tel. 071 414 50 60
infotg@thoma-immo.ch
www.thoma-immo.ch

30. September 2019



Massstab 1:100 (1cm = 1m)



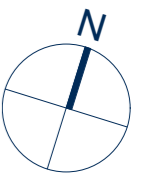
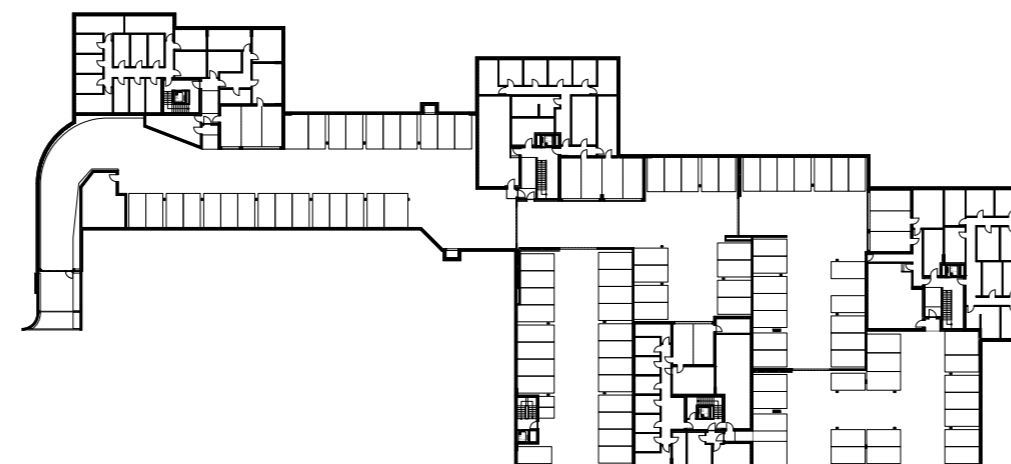
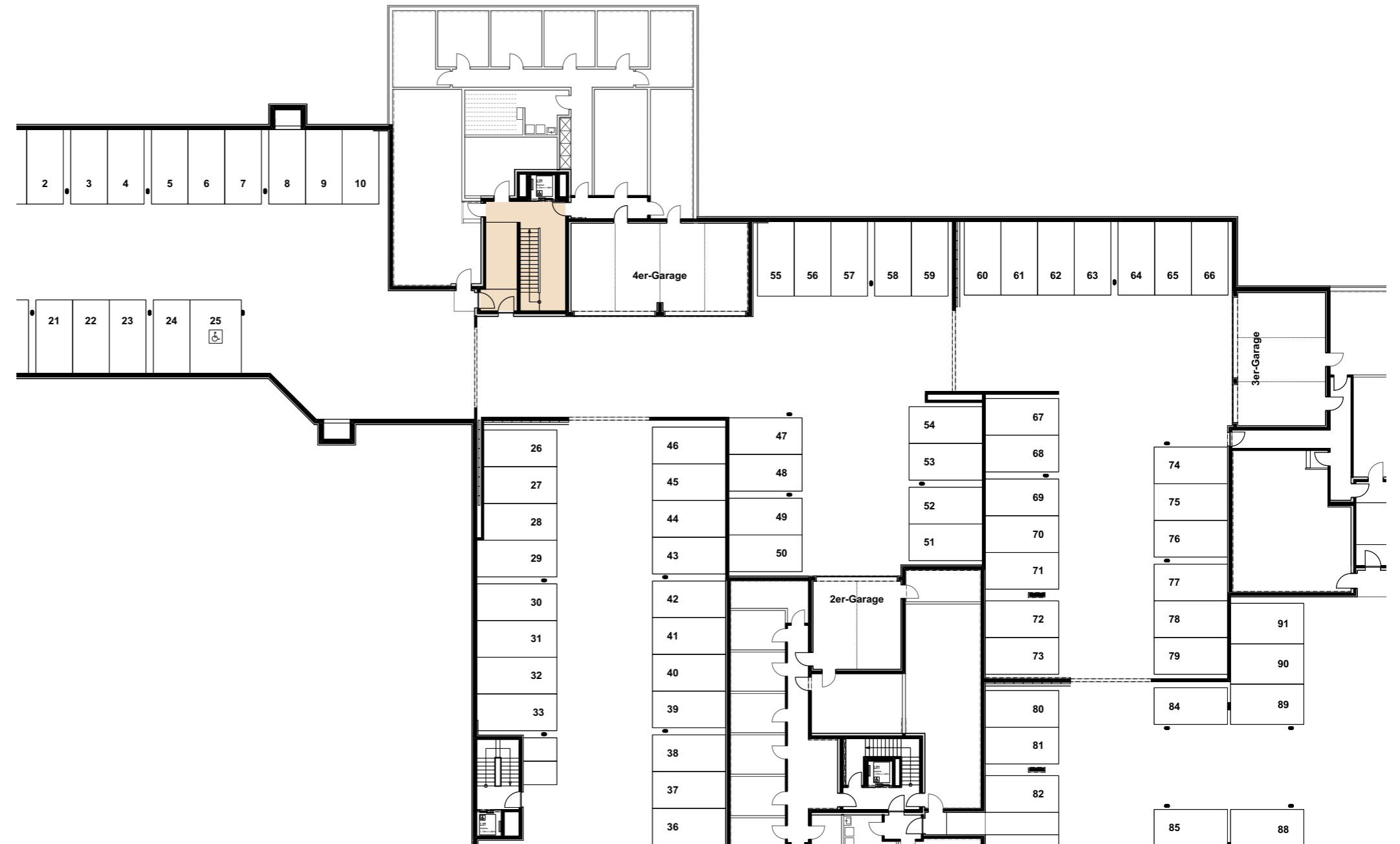
Wohnung EG/01 (Erdgeschoss)

| | |
|---------------------|-----------------------|
| Anzahl Zimmer | 4.5 |
| Wohnfläche (brutto) | 157.30 m ² |
| Wohnfläche (netto) | 148.00 m ² |
| Aussenbereich | 51.10 m ² |
| Keller | 13.30 m ² |

THOMA[^]
IMMOBILIEN TREUHAND

Beratung + Verkauf
THOMA Immobilien Treuhand AG
Bahnhofstrasse 13A
8580 Amriswil
Tel. 071 414 50 60
infotg@thoma-immo.ch
www.thoma-immo.ch

30. September 2019



0 5 10 15m

Masstab unbestimmt